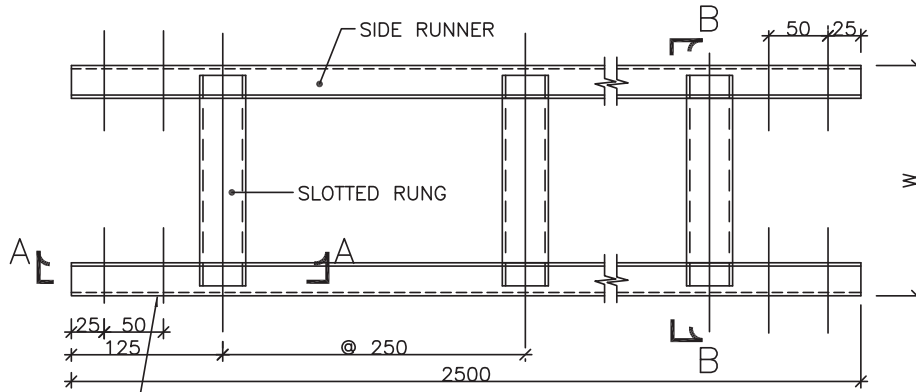
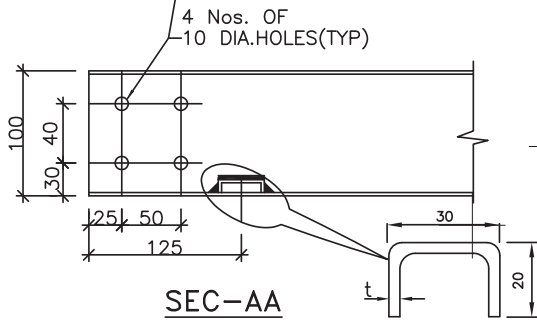


Date: 07-Mar-2019

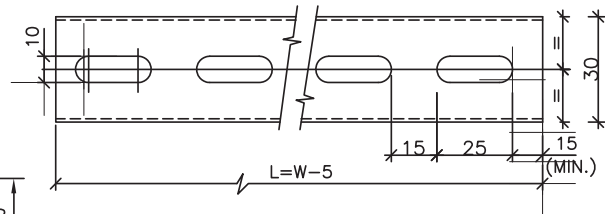
*Approval doesn't absolve the EPC contractor of its responsibility as specified in the Contract



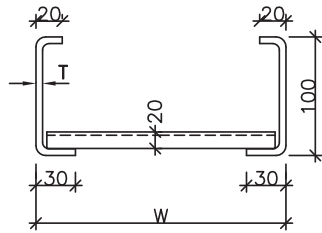
LADDER TYPE CABLE TRAY



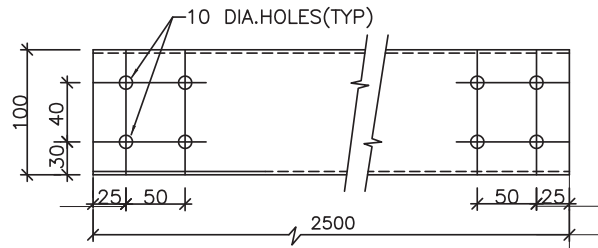
SEC-AA



SLOTTED RUNG



SEC-BB



SIDE RUNNER

W	150	300	450	600
L	145	295	445	595
T	2	2	2	2
t	2	2	2	2

FOR GENERAL NOTES REFER SHEET 11 OF 11



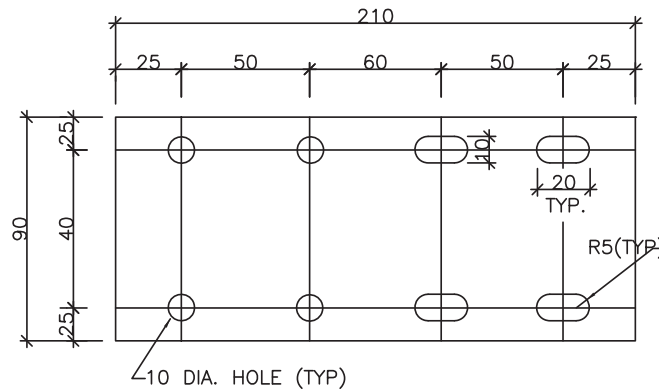
TYPICAL DETAILS OF CABLE TRAYS AND ACCESSORIES

DWG. NO.
MAITREE-00-BTW-EDB-105068-PEM

Sheet-3 of 11 Rev-02

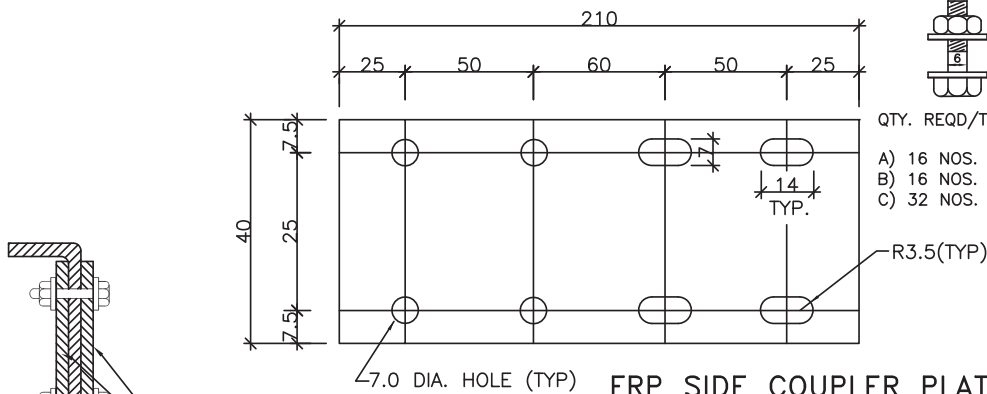
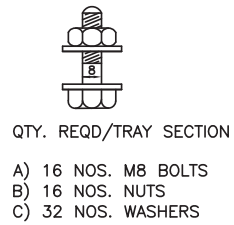
Date: 07-Mar-2019

*Approval doesn't absolve the EPC contractor of its responsibility as specified in the Contract



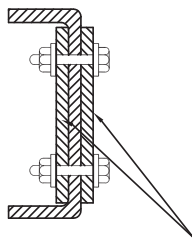
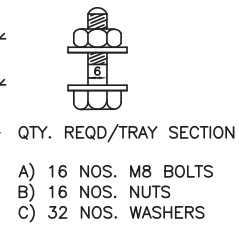
**SIDE COUPLER PLATE FOR
LADDER/PERFORATED TYPE TRAYS**
(600/450/300/150W TRAYS)

QTY. REQUIRED/TRAY SECTION : 4 NOS.



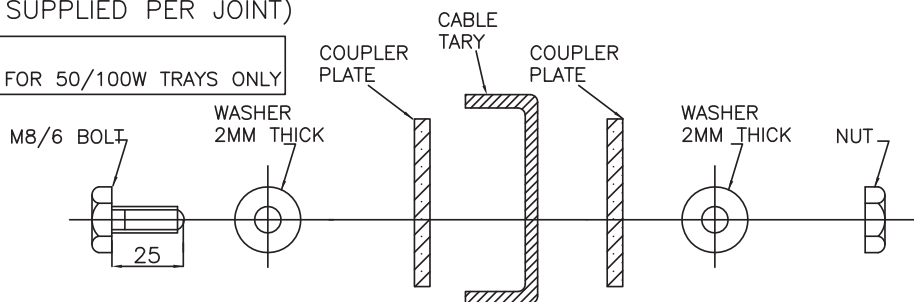
**FRP SIDE COUPLER PLATE FOR
FRP PERFORATED TYPE TRAYS**
(50/100W TRAYS)

QTY. REQUIRED/TRAY SECTION : 4 NOS.



(2 NOS. COUPLER PLATES
OF 3 MM THICKNESS TO
BE SUPPLIED PER JOINT)

NOTE:
M6 BOLT FOR 50/100W TRAYS ONLY



SEQUENCE OF M8/6 BOLT, WASHER, NUT, COUPLER PLATE & CABLE TRAY

FOR TYPICAL CABLE TRAY JOINT

FOR GENERAL NOTES REFER SHEET 11 OF 11



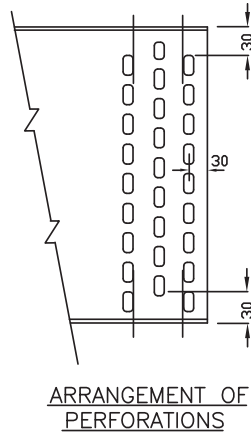
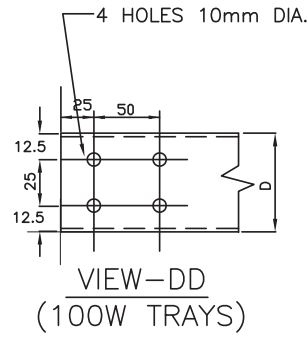
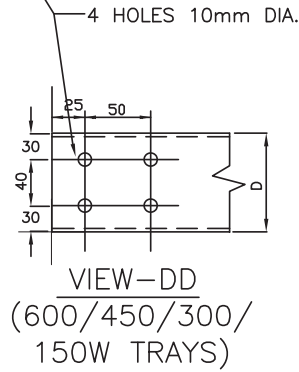
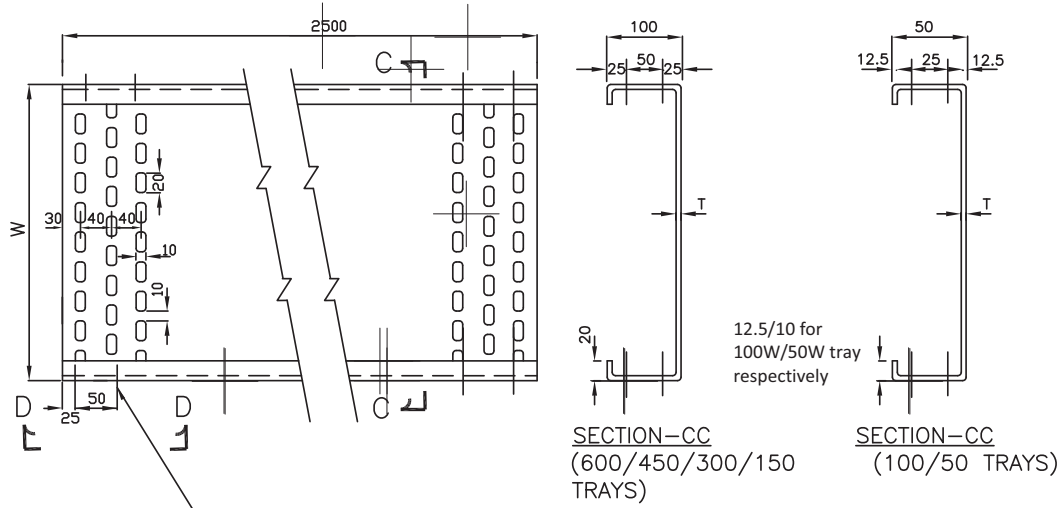
**TYPICAL DETAILS OF CABLE TRAYS AND
ACCESSORIES**

DWG. NO.
MAITREE-00-BTW-EDB-105068-PEM

Sheet-4 of 11 Rev-02

Date: 07-Mar-2019

*Approval doesn't absolve the EPC contractor of its responsibility as specified in the C contract



TRAY WIDTH W (mm)	600	450	300	150	100	50
TRAY DEPTH D (mm)	100	100	100	100	50	50
T (mm)	2	2	2	2	2	2

PERFORATED TYPE TRAY

FOR GENERAL NOTES REFER SHEET 11 OF 11



TYPICAL DETAILS OF CABLE TRAYS AND ACCESSORIES

DWG. NO.
MAITREE-00-BTW-EDB-105068-PEM

Sheet-8 of 11 Rev-02